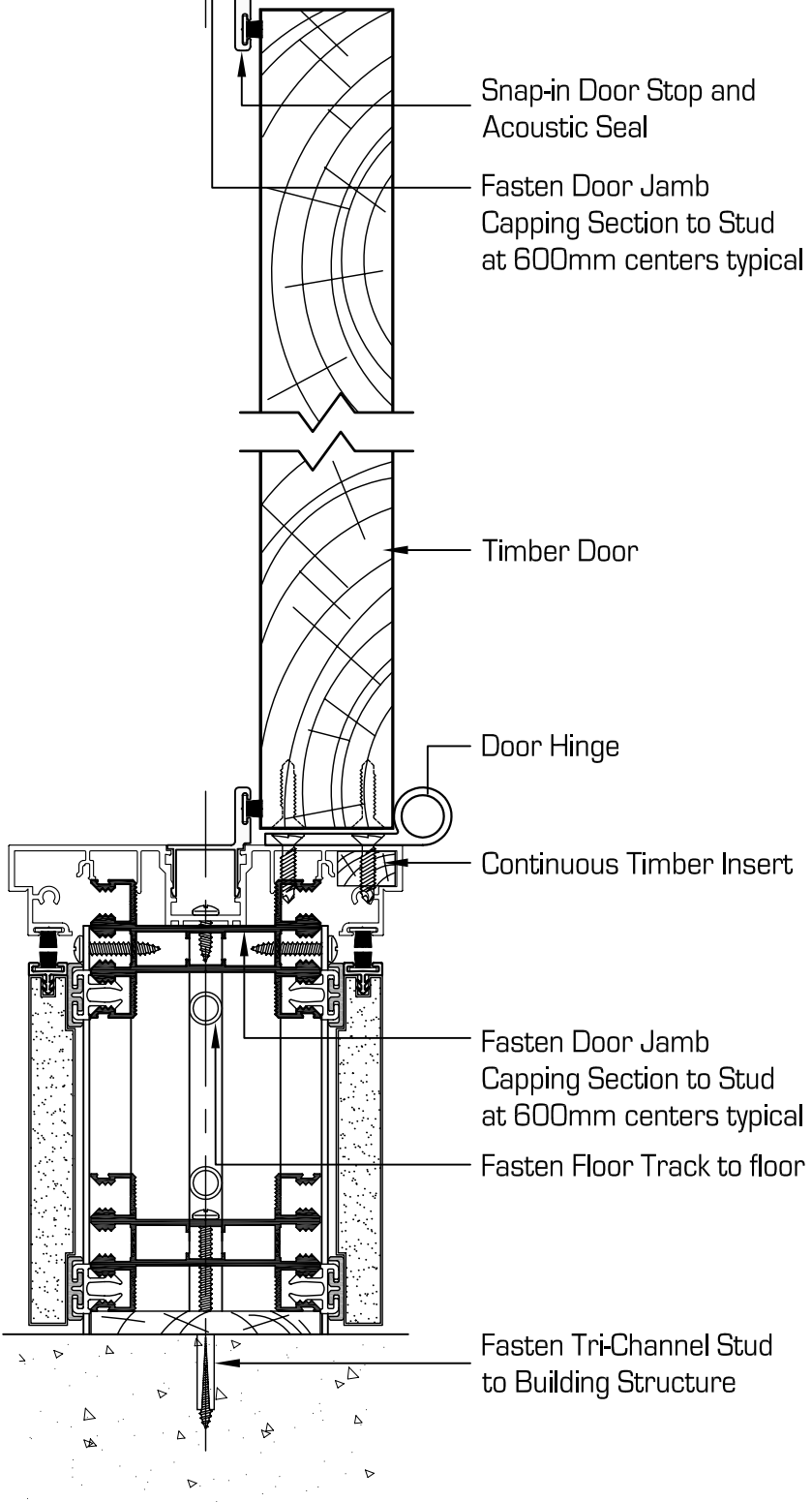
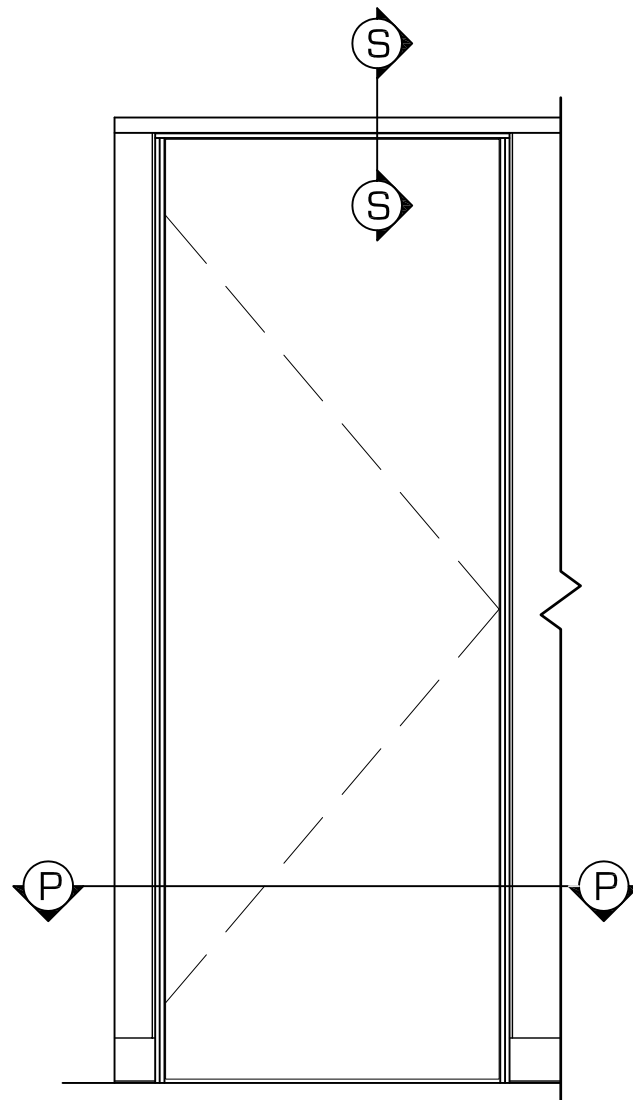


S Door Head Section



P Plan



Elevation

DO NOT MEASURE OFF DRAWING

DRAWING NOT TO SCALE



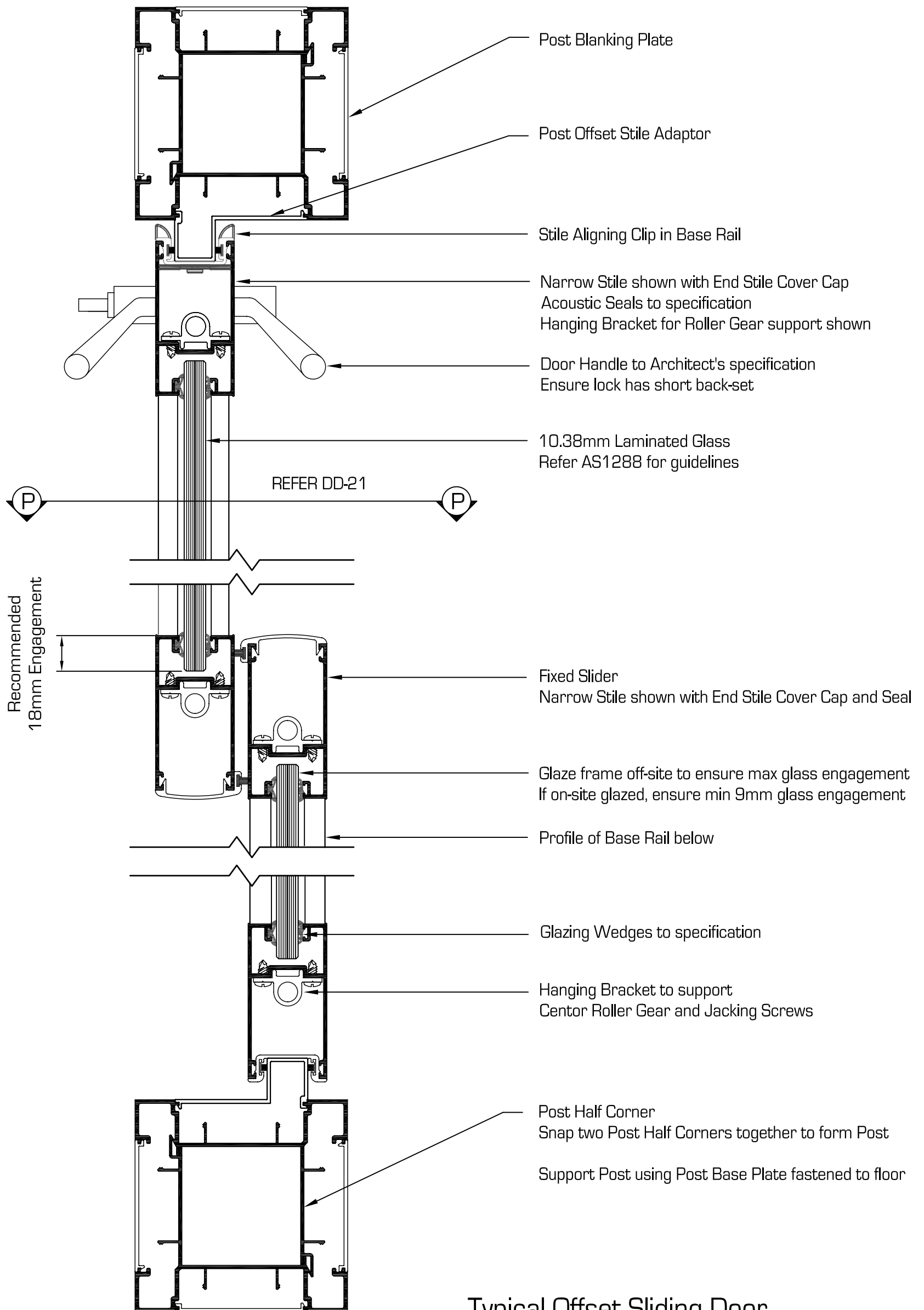
TYPICAL DOOR DETAILS

DESIGN DETAILS

ISSUE DATE
DEC 2007

RELEASE
4.0

DD-19



Typical Offset Sliding Door
Plan Section at Mid-Height

Max Door Size 2400x2700 (4800 Opening)

DO NOT MEASURE OFF DRAWING

DRAWING NOT TO SCALE



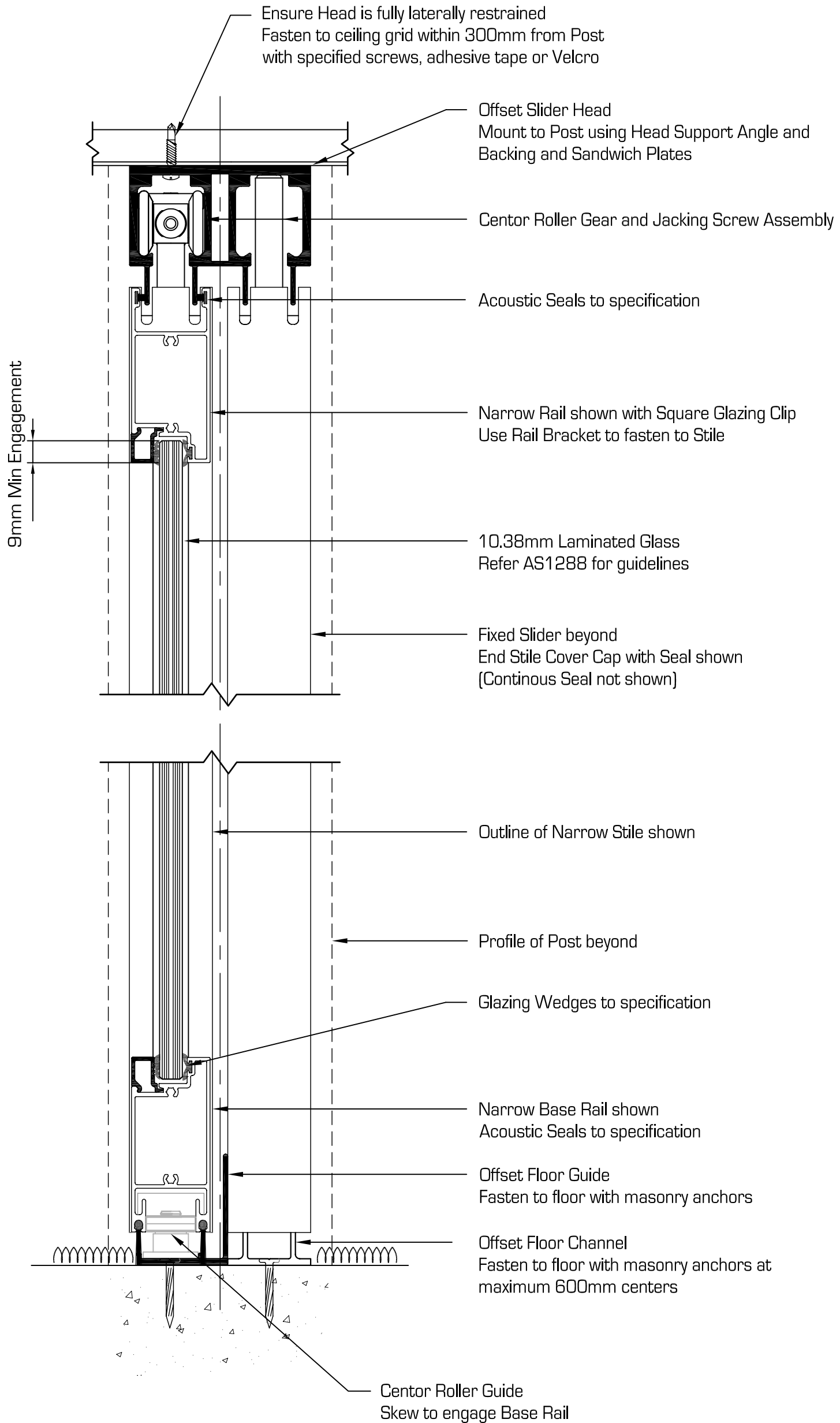
TYPICAL OFFSET SLIDING DOOR DETAILS

DESIGN DETAILS

ISSUE DATE
DEC 2007

RELEASE
4.0

DD-20



S Section (Refer Plan Section DD-20)

DO NOT MEASURE OFF DRAWING

DRAWING NOT TO SCALE



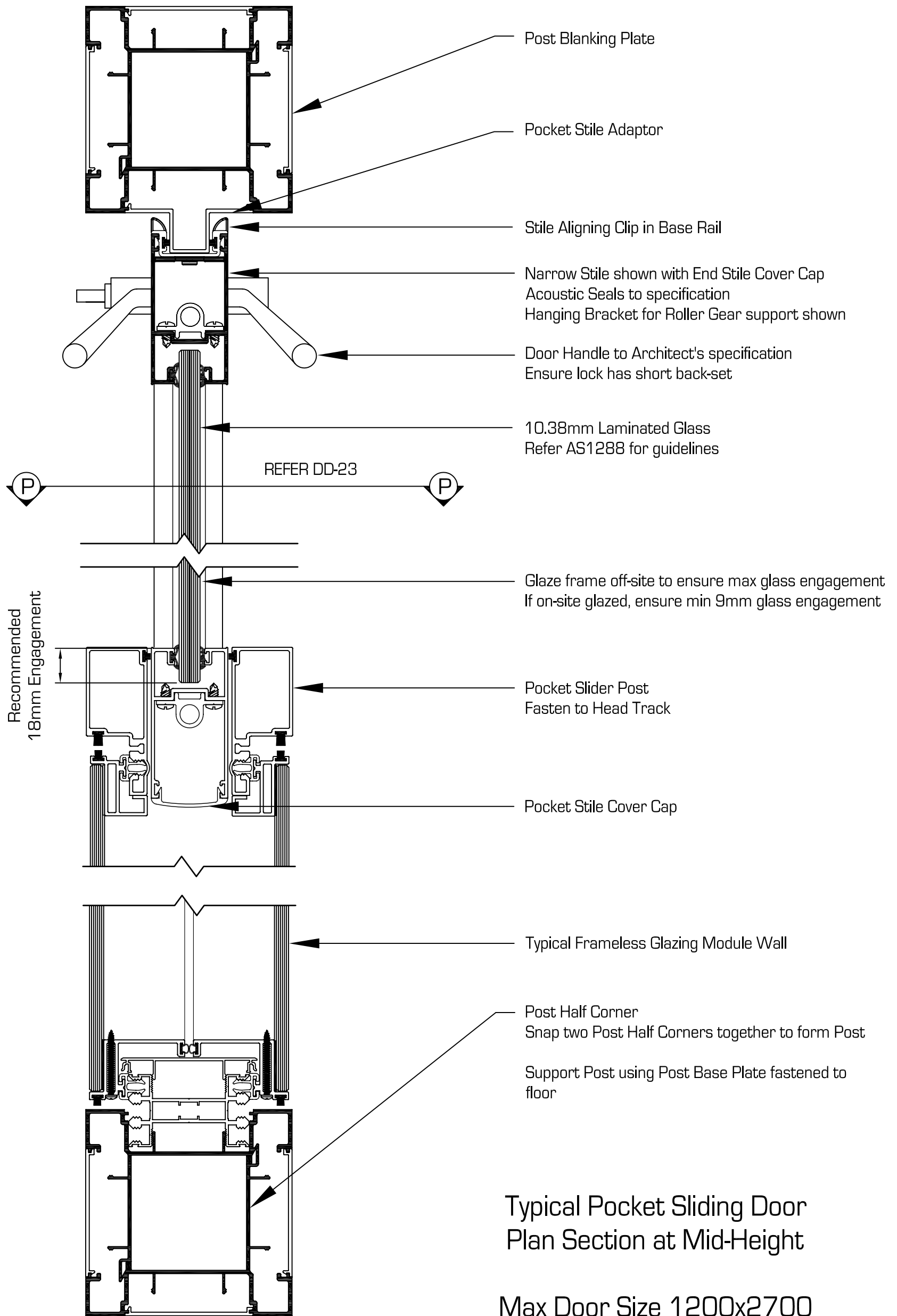
TYPICAL OFFSET SLIDING DOOR SECTION

DESIGN DETAILS

ISSUE DATE
DEC 2007

RELEASE
4.0

DD-21



DO NOT MEASURE OFF DRAWING
DRAWING NOT TO SCALE



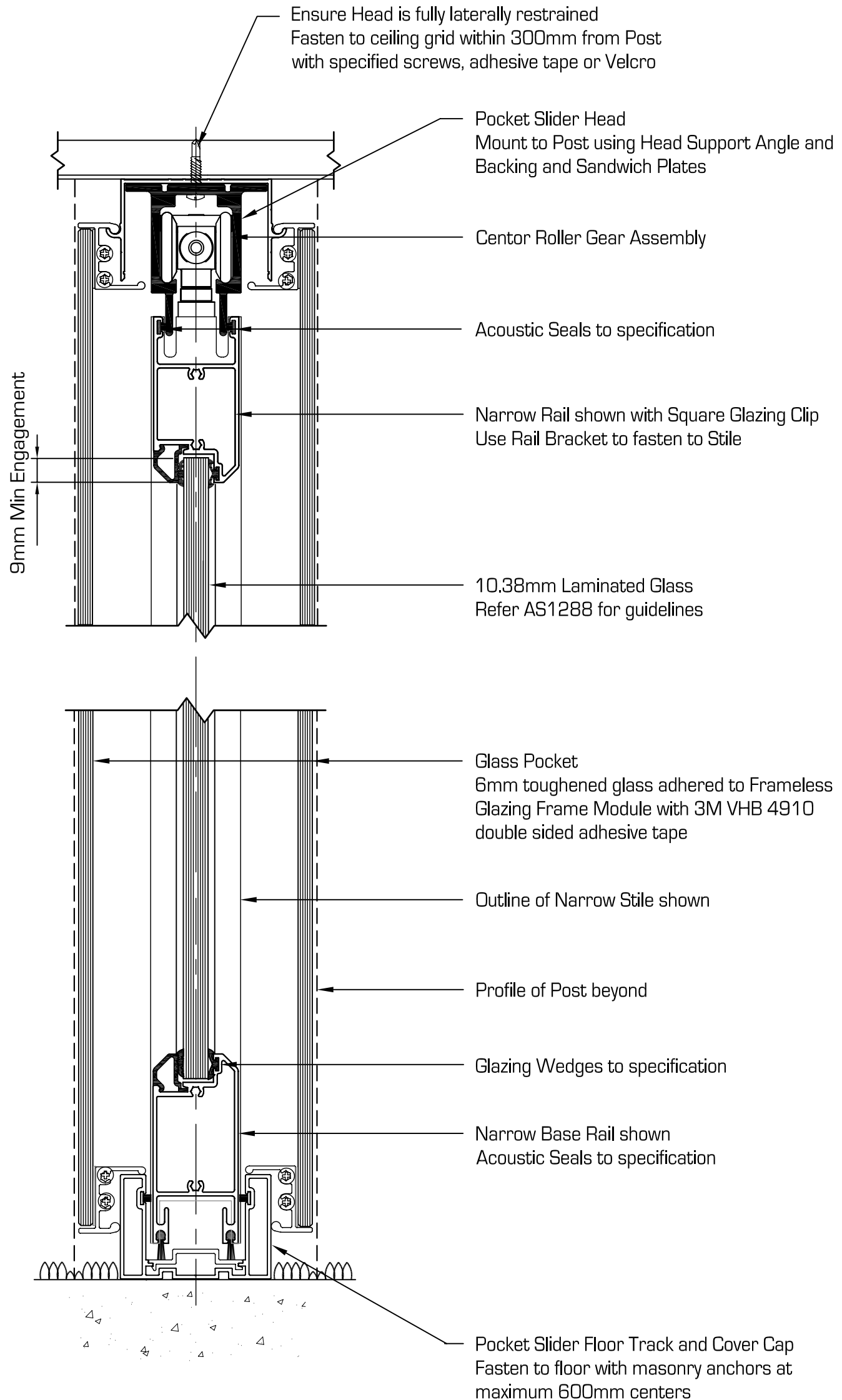
TYPICAL POCKET SLIDING DOOR DETAILS

DESIGN DETAILS

ISSUE DATE
DEC 2007

RELEASE
4.0

DD-22



S Section (Refer Plan Section DD-22)

DO NOT MEASURE OFF DRAWING

DRAWING NOT TO SCALE



TYPICAL POCKET SLIDING DOOR DETAILS

DESIGN DETAILS

ISSUE DATE
DEC 2007

RELEASE
4.0

DD-23